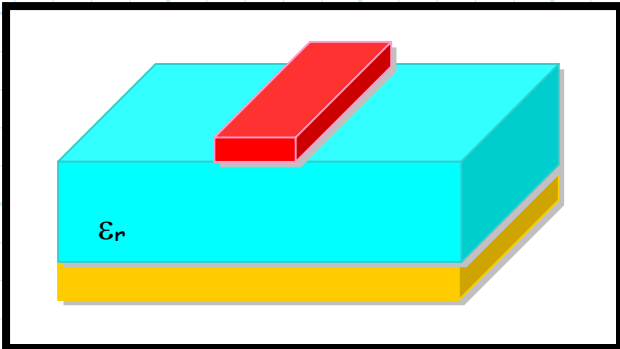
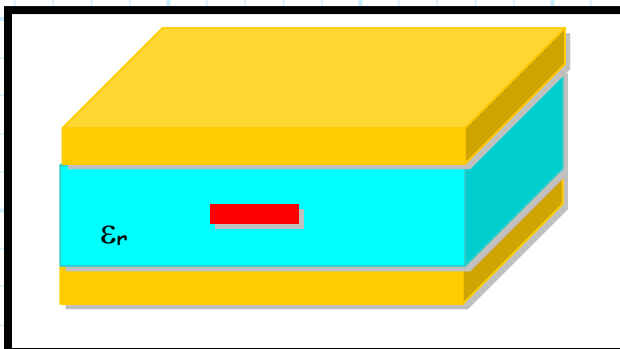


Printed Circuit Board Transmission Lines



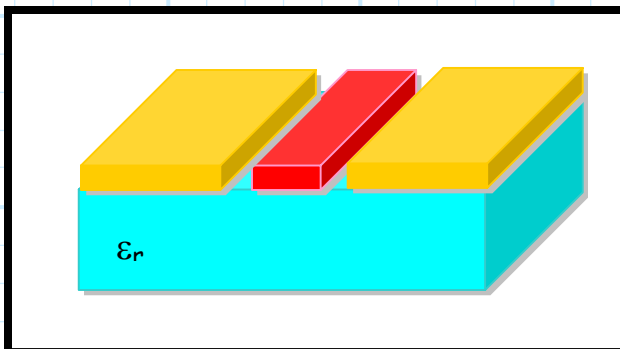
Microstrip

Probably most popular PCB transmission line. Easy fabrication and connection, yet is **slightly** dispersive, lossy, and difficult to analyze.



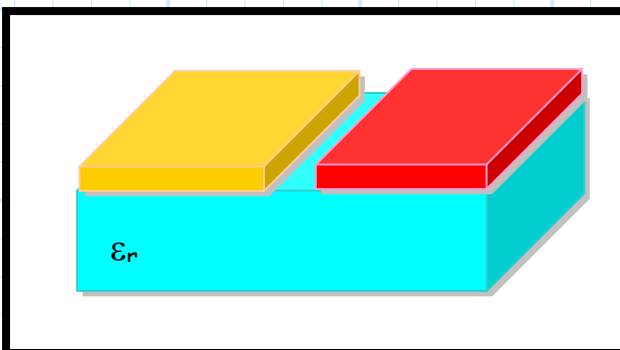
Stripline

Better than microstrip in that it is **not** dispersive, and is more easily analyzed. However, fabrication and connection is more difficult.



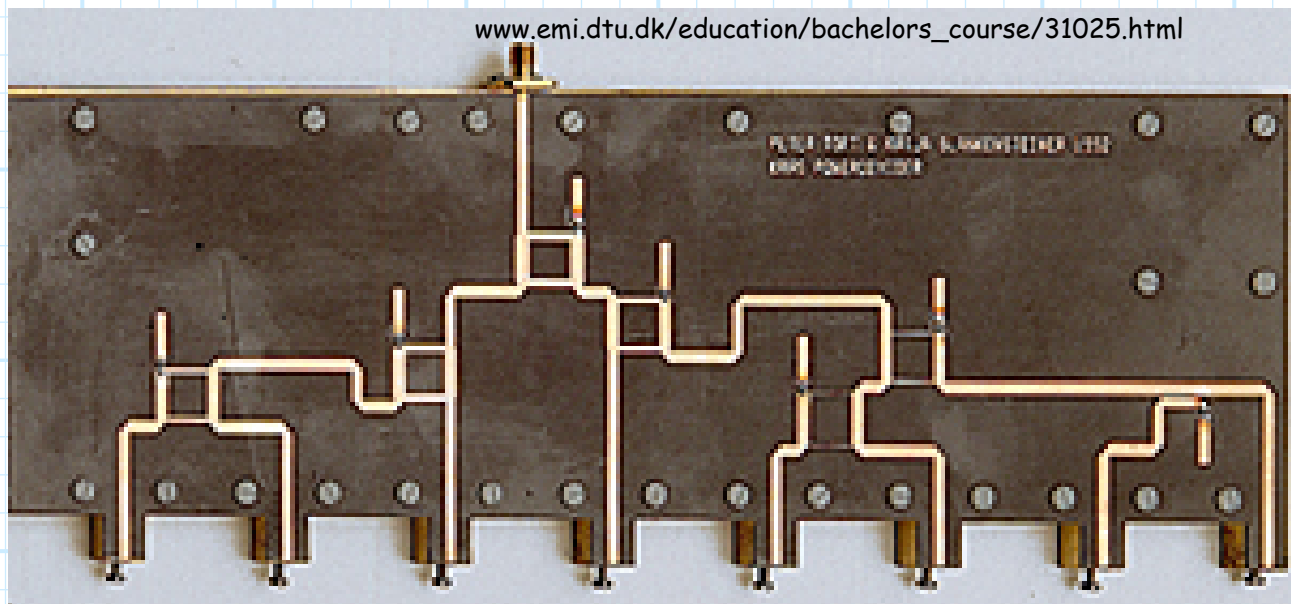
Coplanar Waveguide

The **newest** technology. Perhaps easiest to fabricate and connect components, as **both** ground and conductor are on one side of the board.

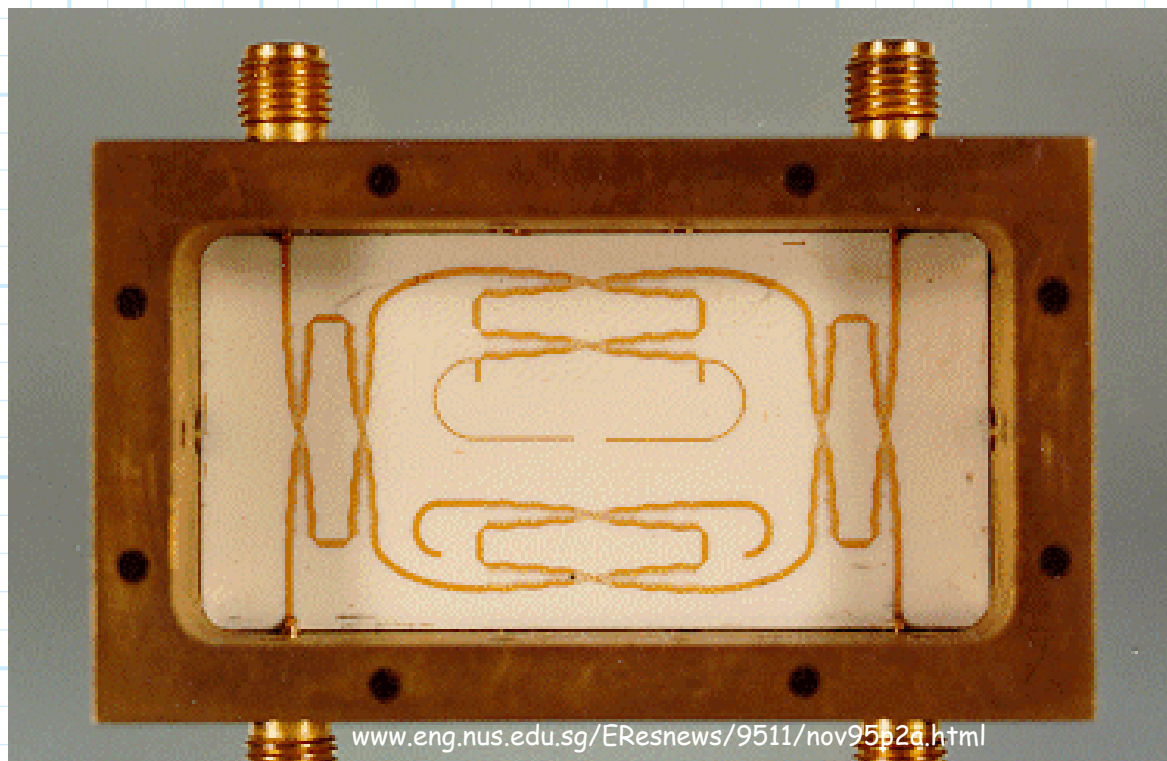


Slotline

Essentially, a dual wire transmission line. Best for **"balanced"** applications. Not used much.



An antenna array feed, constructed using **microstrip** transmission lines and circuits.



A wideband **microstrip** coupler.